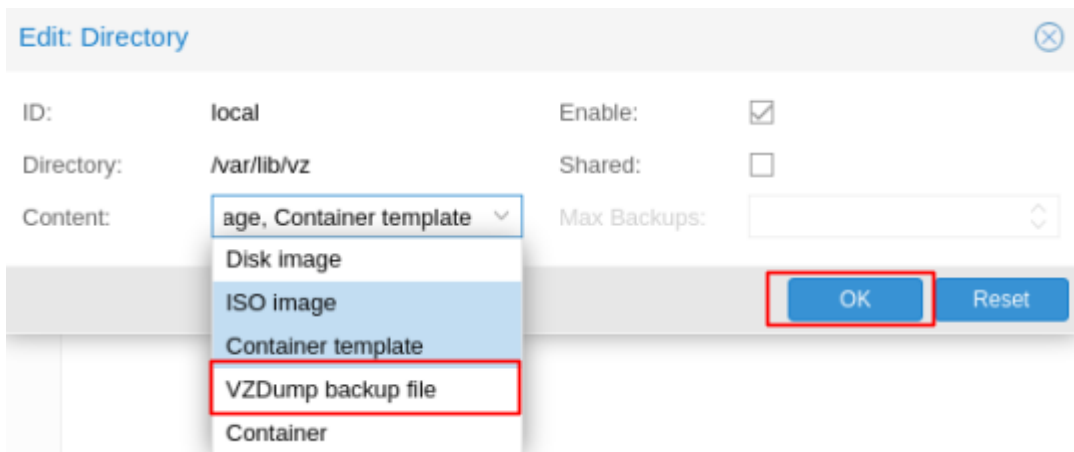


Migrer une VM

1. Prérequis

Le volume de stockage "local" contenant les backups doit posséder le mode "VZDump backup files" :



2. Création de la backup

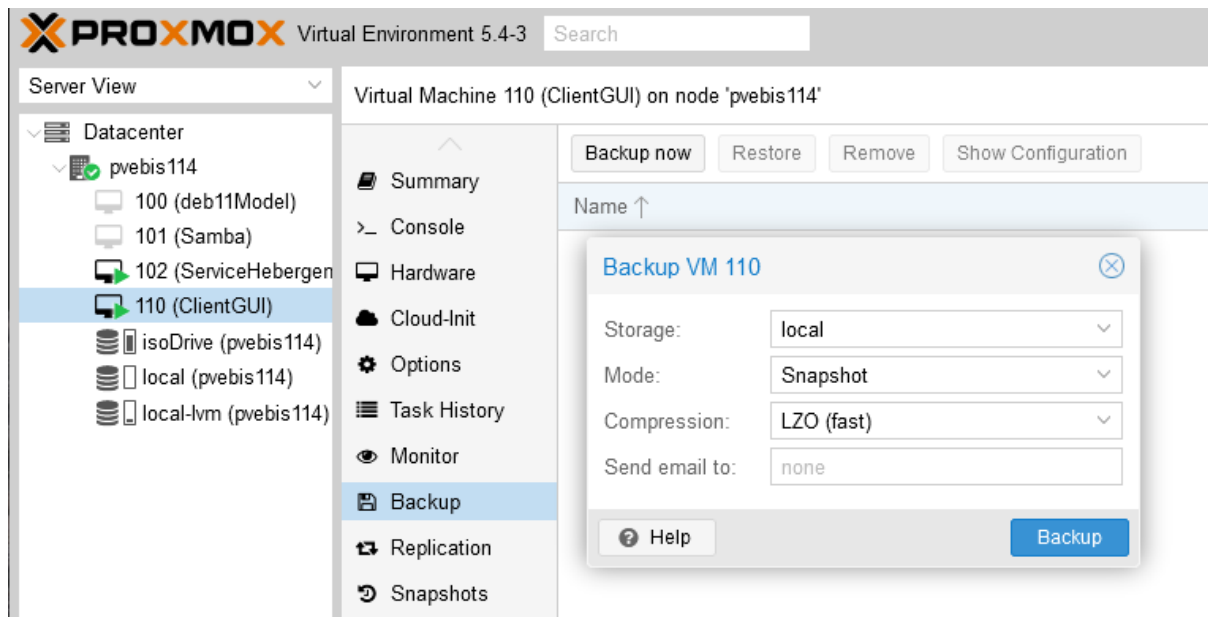
CLI

On crée la backup avec l'outil vzdump :

```
#vzdump <vmId> --dumpdir /var/lib/vz/dump/ --mode suspend --compress lzo
```

GUI

VM à sauvegarder → Backup → Backup now → (On sélectionne les paramètres souhaités)



3. Transfert de la backup

Transfert du fichier de backup vers le serveur proxmox distant :

```
#scp /var/lib/vz/dump/<NomBackup>.vma.lzo <User>@<IpServeurDistant>:/var/lib/vz/dump/
```

4. Restauration sur l'hôte distant

CLI

On restaure la backup avec l'outil vzrestore :

```
#vzrestore /var/lib/vz/dump/<NomBackup>.vma.lzo <newVmId>
```

GUI

Volume de stockage local → Content → fichier de sauvegarde → Restore → (On sélectionne les paramètres souhaités)

The screenshot displays the Proxmox VE 5.4-3 interface. On the left, the 'Server View' sidebar shows a tree structure under 'Datacenter' with a node 'pvebis114'. Under this node, several storage volumes are listed: '100 (deb11Model)', '101 (Samba)', '102 (ServiceHebergen)', '110 (ClientGUI)', 'isoDrive (pvebis114)', 'local (pvebis114)', and 'local-lvm (pvebis114)'. The 'local (pvebis114)' volume is selected.

The main panel shows the 'Storage local on node pvebis114' view. It has tabs for 'Summary', 'Content', and 'Permissions'. The 'Content' tab is active, displaying a list of backup files under the heading 'VZDump backup file (1 Item)'. One file is listed: 'vzdump-qemu-110-2021_11_27-16_48_32.vma.lzo'.

At the top of the main panel, there are buttons for 'Restore', 'Remove', 'Templates', 'Upload', and 'Show Configuration'. The 'Restore' button is highlighted.

A modal window titled 'Restore: VM' is open in the foreground. It contains the following fields:

- Source: vzdump-qemu-110-2021_11_27-16_48_32.vma.lzo
- Storage: local-lvm (dropdown menu)
- VM ID: 103 (dropdown menu)
- Read Limit (MiB/s): Defaults to target storage restore limit (dropdown menu)
- Unique:

At the bottom right of the modal window, there is a 'Restore' button. At the bottom left of the main interface, there are buttons for 'Tasks' and 'Cluster log'.